

## Conscious Sedation

Since endoscopic procedures can cause some discomfort, your physician will usually recommend administration of what is known as “conscious sedation”. This is a combination of a sedative medication (Versed) and a pain medication (Fentanyl).

Conscious sedation is not “general anesthesia”. We will administer as much medication necessary to keep you comfortable and safe. You will still be able to breath on your own and follow simple instructions. If we note that your blood pressure is getting low or that you are not breathing as well as you should, we will be limited on the amount of sedation we can provide.

If you have had problems with sedation in the past, we recommend that you contact your physician or the endoscopy department to discuss options for your comfort during your exam. Please make this contact well in advance of the scheduled date of your procedure to avoid any unnecessary delays.

Due to the sedation, you may not remember what you were told after the exam. Please contact your physician if you have questions

### All Patients—Bring a Driver

Because of the medications used, you will need to bring someone with you to drive you home. It is recommended that you not work, drive or operate machinery for the rest of the day.

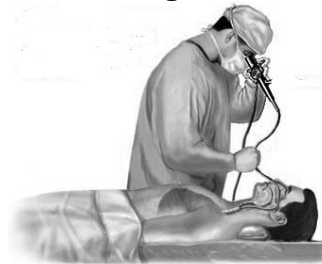
### All Patients—Bring a Med List

Please bring a list of your current medications, allergies and medical history with you as this will help us to ensure your safety.



## Endoscopy Services

1300 East 5<sup>th</sup> Ave.  
Winfield, KS 67156  
(620) 221-2300, ext. 197  
Scheduling – ext. 500



### You are scheduled for:

- Bronchoscopy
- EGD / Gastroscopy
- Flexible Sigmoidoscopy
- Colonoscopy

### Your procedure is scheduled for:

Date: \_\_\_\_\_

Time: \_\_\_\_\_

You need to be at the hospital to check-in at the registration area **45 minutes prior** to your scheduled time.

## Preparation for Colonoscopy Or Flexible Sigmoidoscopy

You will be given a “Fleet” Prep Kit by your physician. We recommend that you follow the directions below for the 24-hour prep, as we have found this to be the most effective and allows for a better nights sleep prior to your procedure.

**8:00 AM:** Eat a light meal.

**9:00 AM:** start drinking at least 8 ounces of clear liquids **every hour**. This is a minimum amount and it is recommended that you drink more fluids if possible. You may drink as much clear fluids as you desire up to midnight prior to your exam. Avoid red and purple clear liquids as these can be confused with bleeding.

**4:00 PM:** Take Fleet Phospho-soda. This solution is very salty and it’s recommended to mix the entire bottle with cold apple juice or other clear liquid.

**7:00 PM:** Take 4 Fleet Bisacodyl Tablets

**One hour prior to exam:** Use Fleet Bisacodyl Suppository

## Preparation for EGD / Gastroscopy or Bronchoscopy

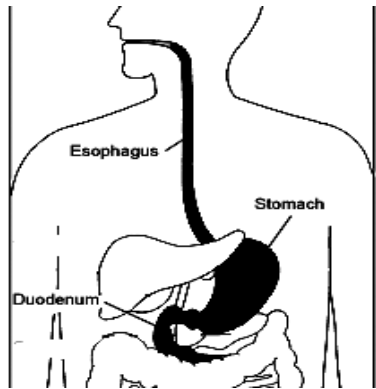
You are asked to not eat or drink anything after midnight prior to your exam.

### Special Note

If you have diabetes or similar disorder discuss any special precautions you might need to take with your physician.

**EGD or Esophagogastroduodenoscopy** is also called **Gastroscopy**.

This procedure enables the physician to look inside the esophagus, stomach, and duodenum (first part of the small intestine).



The procedure might be used to discover the reason for swallowing difficulties, nausea, vomiting, reflux, bleeding, indigestion, abdominal pain, or chest pain.

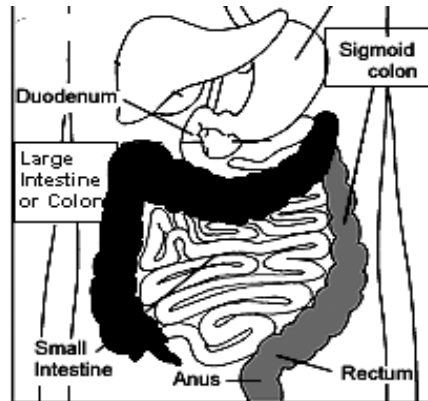
We will treat the back of your throat with a special spray to prevent or reduce gagging. Prior to your leaving the hospital we will test your ability to swallow.

Any **specimens / biopsies** obtained will take 3-10 days for results. Otherwise, you will be told what is found the day of the procedure. Due to the sedation you may not remember what you were told. Please contact your physician if you have questions.

If you have difficulty swallowing or severe abdominal pains after the procedure contact your physician.

**Colonoscopy** allows a physician to look inside the entire large intestine.

**Flexible sigmoidoscopy** enables the physician to look at the first one third of the large intestine from the rectum through the sigmoid colon.



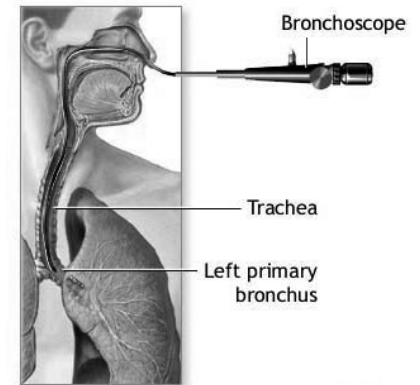
These procedures allow the physician to see things such as inflamed tissue, abnormal growths, and ulcers. They are most often used to look for early signs of cancer in the colon and rectum, causes of unexplained changes in bowel habits and to evaluate symptoms like abdominal pain, rectal bleeding, and weight loss.

Any **specimens / biopsies** obtained will take 3-10 days for results. Otherwise, you will be told what is found the day of the procedure. Due to the sedation you may not remember what you were told. Please contact your physician if you have questions.

If you have excessive bleeding or severe abdominal pains after the procedure contact your physician.

**Bronchoscopy**

This procedure enables the physician to look at the vocal cords, trachea and major airways in the lungs.



The procedure allows the physician to see abnormalities of lung tissue and vocal cords. It may also be used to remove excessive secretions and to diagnose difficult lung disorders.

Any **specimens / biopsies** obtained will take 3-10 days for results. Otherwise, you will be told what is found the day of the procedure. Due to the sedation you may not remember what you were told. Please contact your physician if you have questions.

We will treat the back of your throat and nose with a special spray to prevent or reduce gagging and coughing. Prior to your leaving the hospital we will test your ability to swallow.

If you feel severely short of breath or are coughing up pure blood after the procedure contact your physician.